

RS2600 Multi-Gas Analyzer



JINSP® RS2600 multi-gas analyzer is based on Raman spectroscopy and can detect all gases except noble gases, enabling **simultaneous online analysis of multiple gases** including:

- Petrochemical industry: alkane, alkene and alkyne gases such as CH₄, C₂H₆, C₃H₈, C₂H₄, etc.
- Fluorine chemical industry: corrosive gases such as F₂, BF₃, PF₅, Cl₂, HCl, HF, etc.
- Metallurgical industry: N₂, H₂, O₂, CO₂, CO, etc.
- H₂, D₂, T₂, HD, HT, DT and other gas isotopologues.

Technical highlights

- **Multi-component:** simultaneous online analysis of multiple gases
- **Universal:** >500 types of gases are detectable except noble gases
- **No need for pressure control:** Quantification is not affected by changes in sample gas pressure
- **Rapid response:** Complete a single detection within seconds
- **Wide quantitative range:** detection limit is as low as ppm level, and the measurement range can be as high as 100%

JINSP COMPANY LIMITED

JINSP Company Limited (JINSP) is a company specialized in spectral analytical technology. With the experts in such fields as optics, machinery, electricity and software, we are engaged in the development and production of scientific and industrial spectrometers. With our existing technology, JINSP has won key awards in several international invention exhibitions and more than 200 patents, and passed the European Union CE certification and the EU Civil Aviation ECAC certification. Our thousands of products have been exported to dozens of countries worldwide.

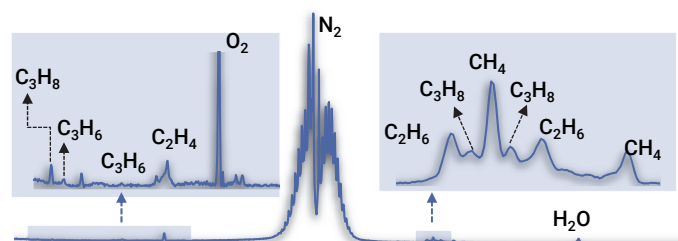


Contact us

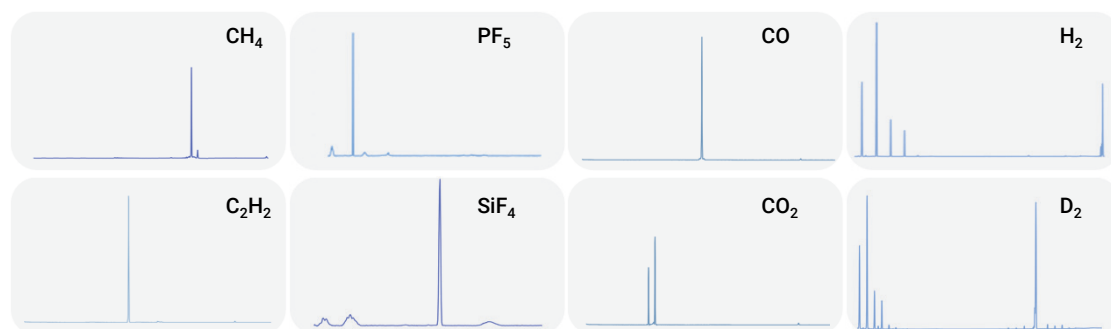
Typical spectra

Gas mixture analysis

Component	Concentration (ppm)
CH ₄	50
C ₂ H ₆	30
C ₃ H ₈	40
C ₂ H ₄	15
C ₃ H ₆	20



Standard gas spectra



Field of application



Natural gas industry



Fluorine chemical industry



Metallurgical industry



Electronic special gas



Coal chemical industry



Pharmaceutical chemical industry

Specifications

Technical Principle	Raman spectroscopy
Laser excitation wavelength	532 ± 0.5 nm
Spectral coverage	200 ~ 4200 cm ⁻¹
Spectral resolution	≤8 cm ⁻¹ at full spectral range
Air circuit interface	6 mm standard tube fitting (3 mm, 1/8", and 1/4" are optional)
Connection interface	USB2.0、RS232 DB9、RJ45
Warm-up time	<10 min
Input voltage	100~240 VAC, 50~60 Hz
Sample gas temperature	-50 ~ 40 °C
Sample gas pressure	<1.0 MPa
Ambient temperature	0 ~ 35 °C
Ambient humidity	0 ~ 90%RH
Unit dimensions	485 mm (Width) × 350 mm (Height) × 600 mm (Depth)
Weight	40 kg



Gas inlet Gas outlet

JINSP COMPANY LIMITED

Address: 21/F, Building D, THTF S&T Square, Haidian District, Beijing, P.R. China

Tel.: +86(10)-50837191

E-mail: jinsp@jinsp-tech.com

Website: www.jinsptech.com



Contact us

JZ-EN-V1.0-202404